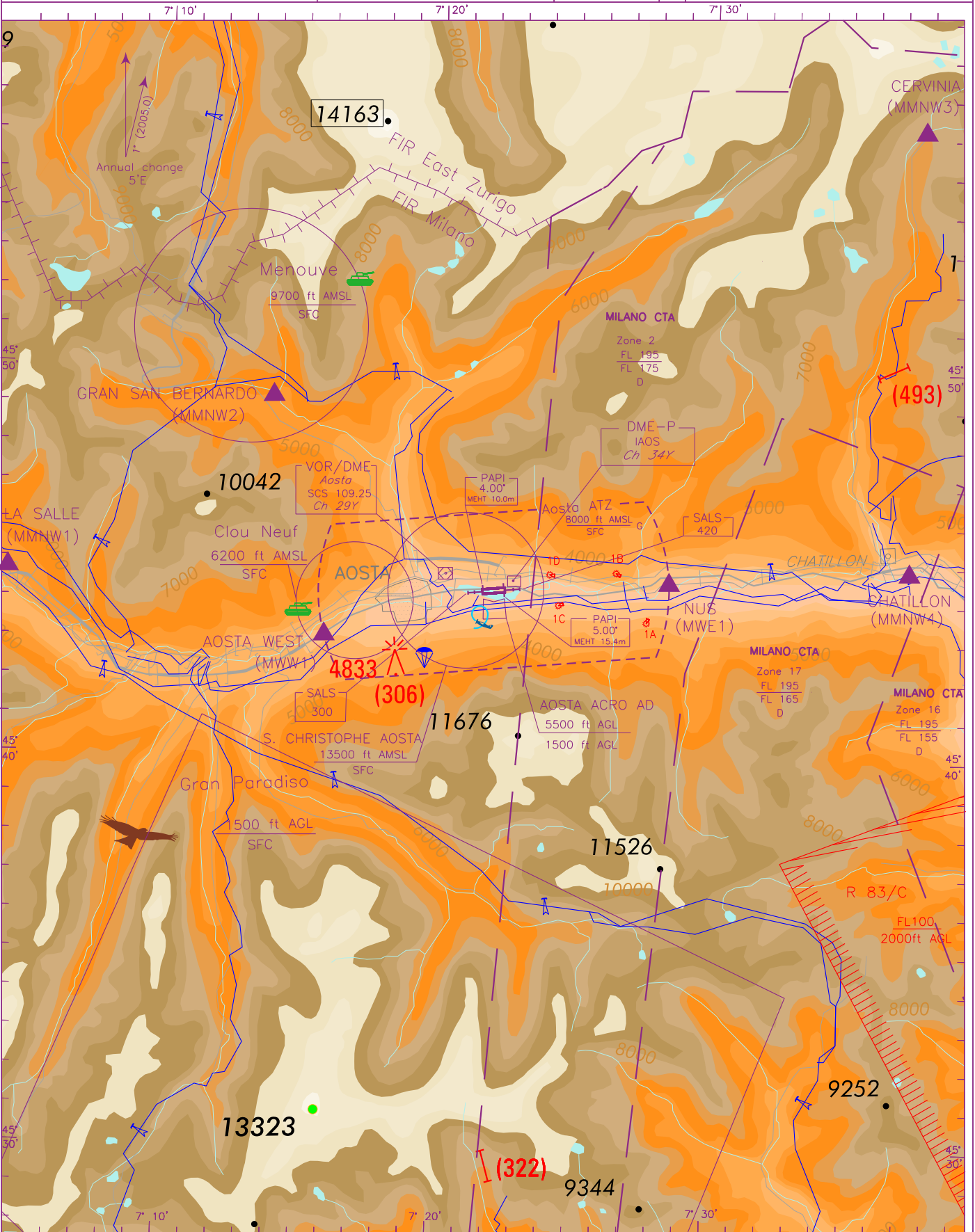


SCALE 1:250,000 	ACC <i>Milano Radar</i>	126.750	AD ELEV 1796	L I M W	AOSTA
	FIS <i>Milano Information</i>	134.175			
	AFIS <i>Aosta Aerodrome Info</i>	119.950			



AIRSPACE CLASSIFICATION See AIP ENR 1.4 TRANSITION ALT 15000 ELEV AND ALT IN FT BEARINGS ARE MAGNETIC	LIGHTED GATES (1) GATE 1A (St. Marcel Rean): 45°43'33"N 007°27'43"E GATE 1B (Quart Vollein): 45°44'49"N 007°26'34"E GATE 1C (Brissogne): 45°43'58"N 007°24'27"E GATE 1D (Quart Antenna): 45°44'45"N 007°24'10"E	L E G E N D
	R 83/C FL100 2000ft AGL	
	(322)	