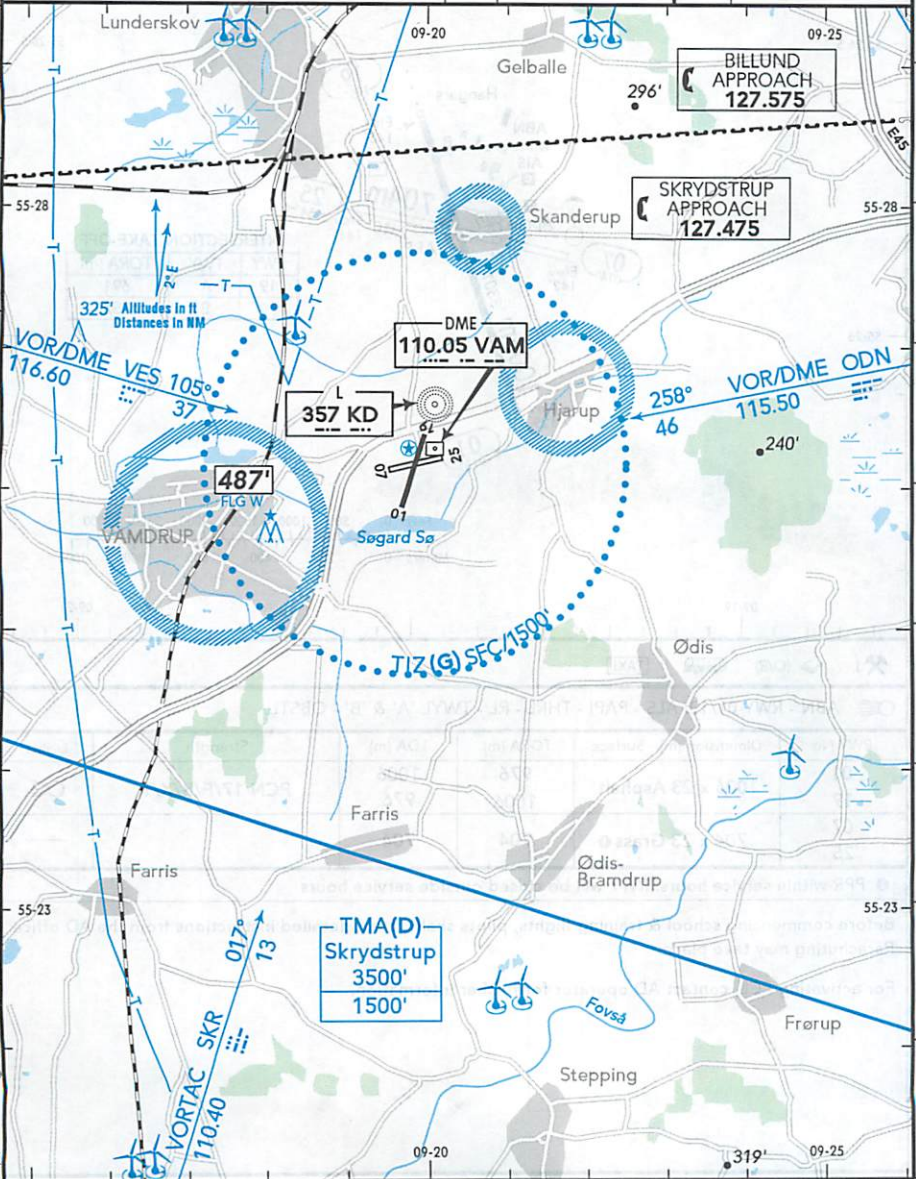


(APP)
 SKRYDSTRUP APPROACH **127.475** (da, en)

EKVD
 Elev **143'** / 44 m
 N55 26.2
 E009 19.9
 5.4 NM SW Kolding

(AFIS) 25 NM/4000'
 VAMDRUP AFIS **120.500** (da, en)

RWY	ILS	RWY	ILS



197-61

SCALE 1:100 000

© 2015 AND DATA SERVICES & V. JEPPESEN
 © 2015 AND DATA SERVICES & V. JEPPESEN
 © 2015 AND DATA SERVICES & V. JEPPESEN

**KOLDING
VAMDRUP
DENMARK**

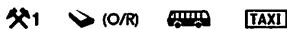
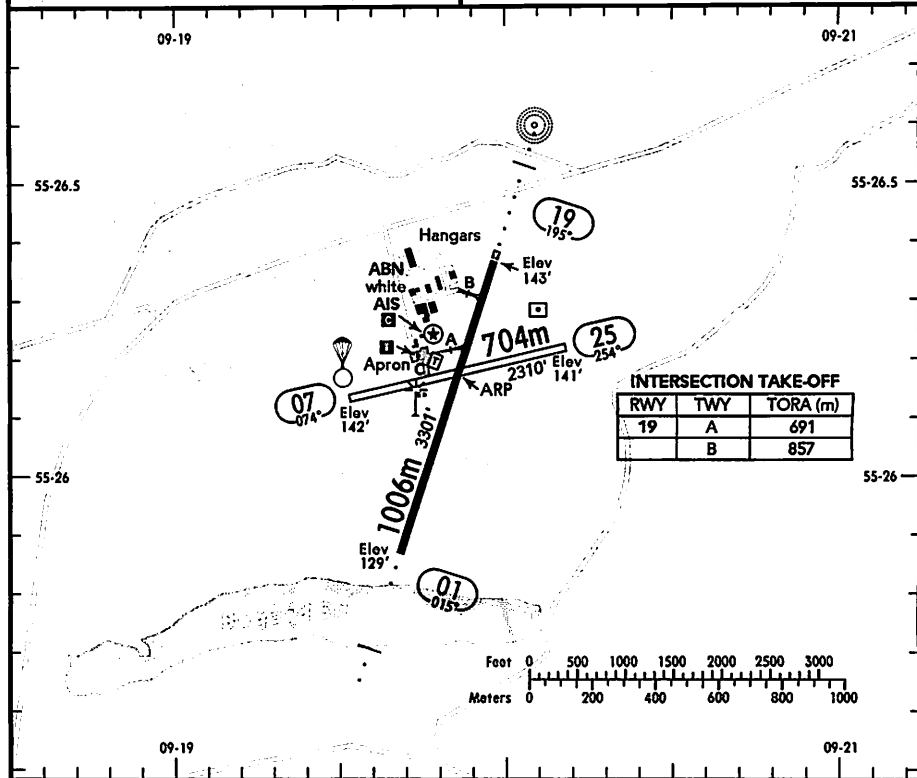
19-2 23 OCT 15

JEPESEN



(FIS)

SKRYDSTRUP APPROACH 127.475



ABN - RWY 01/19: ALS - PAPI - THRL - RL - TWYL 'A' & 'B' - OBSTL.

RWY No	Dimension (m) - Surface	TORA (m)	LDA (m)	Strength	Lights
01		976	1006	PCN 17/F/B/X/T	☞
19	1006 x 23 Asphalt	1006	976		
07		704	704		—
25	704 x 23 Grass				

Ⓢ PPR within service hours. RWY will be closed outside service hours.

Before commencing school & training flights, pilots shall obtain detailed instructions from the AD office. Parachuting may take place.

For activating PCL, contact AD operator for further information.