

EKRD

Elev 153'/47m

N56 30.4  
E010 02.2

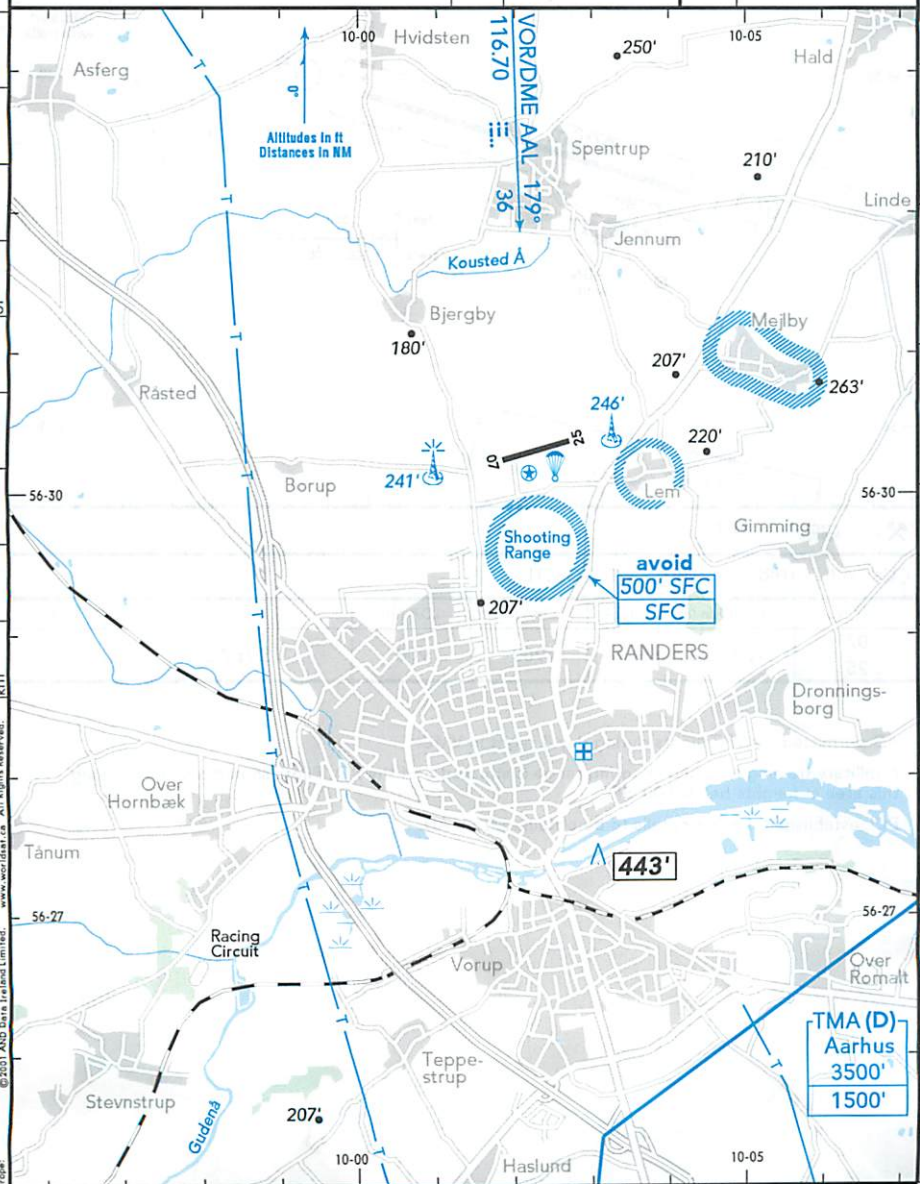
2.5 NM N Randers

(RADIO) 4000' / 25 NM

RANDERS RADIO 122.07

RWY	ILS	RWY	ILS

SCALE 1:100 000



706-1271  
Digital Geography © 2001 AND Data Solutions B.V. www.anddata.com  
© 2001 AND Data Solutions B.V. www.anddata.com  
© 2001 AND Data Solutions B.V. www.anddata.com  
© 2001 AND Data Solutions B.V. www.anddata.com

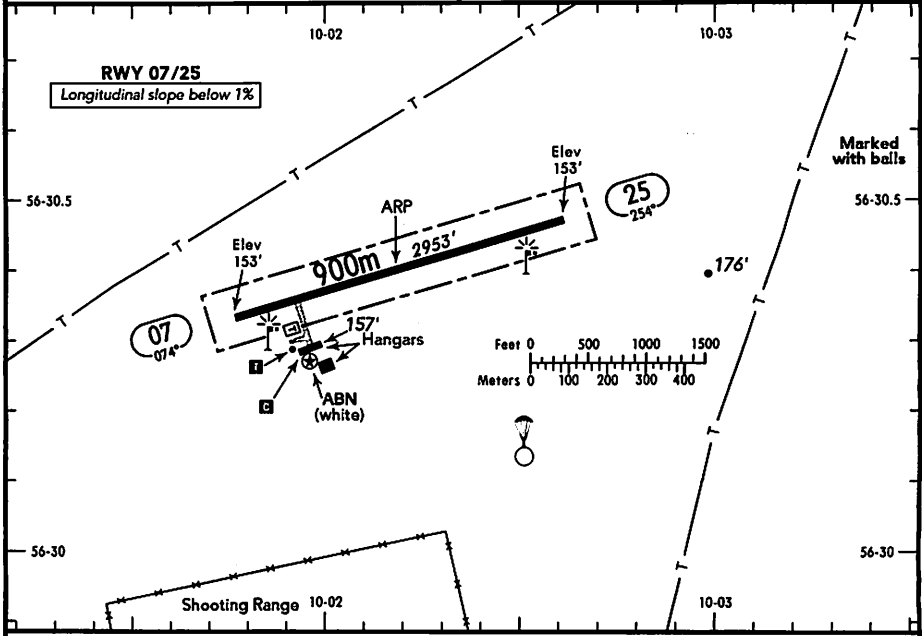
**RANDERS  
RANDERS  
DENMARK**

19-2 28 JUL 99

**JEPESEN**



(FIS)  
**AARHUS APPROACH 119.27**



TAXI

ABN - THRL - RL - TWYL - WDI - OBSTL.

RWY No	Dimension (m) - Surface	TORA (m)	LDA (m)	Strength	Lights
07 25	900 x 23 Asphalt	900	900	5.7t AUW	

AD permitted for VFR flights during day & night in VMC.

A military training area and shooting range is situated S of the AD. Pilots should avoid overflying this area at heights below 500' SFC.

PCL established; further details to be obtained from AD.