

EKOD

HANS CHRISTIAN ANDERSEN

Elev **56'** / 17m

DENMARK

N55 28.6
E010 19.9

5.4 NM NW Odense

(AFIS) FL 100/40 NM

VDF

ODENSE AFIS **119.525** (da, en)

*LLZ/DME freq paired.

RWY	ILS	RWY	ILS
		24*	108.35 OD 238°



© 2011 AND Data Solutions B.V.
 © 2011 AND Data Ireland Limited.
 © 2011 Jeppesen International, Inc. 2012
 www.jepesen.com. All Rights Reserved.
 Digital Geography
 Europe

CHANGES: AD Name - COM - ILS - VAR - Airspace - RWY closed - OBST.

© JEPPESEN, 1986, 2014. ALL RIGHTS RESERVED.

ODENSE

HANS CHRISTIAN ANDERSEN

DENMARK

19-2 26 SEP 14

JEPPESEN



(FIS)

KØBENHAVN INFORMATION 129.475

10-19

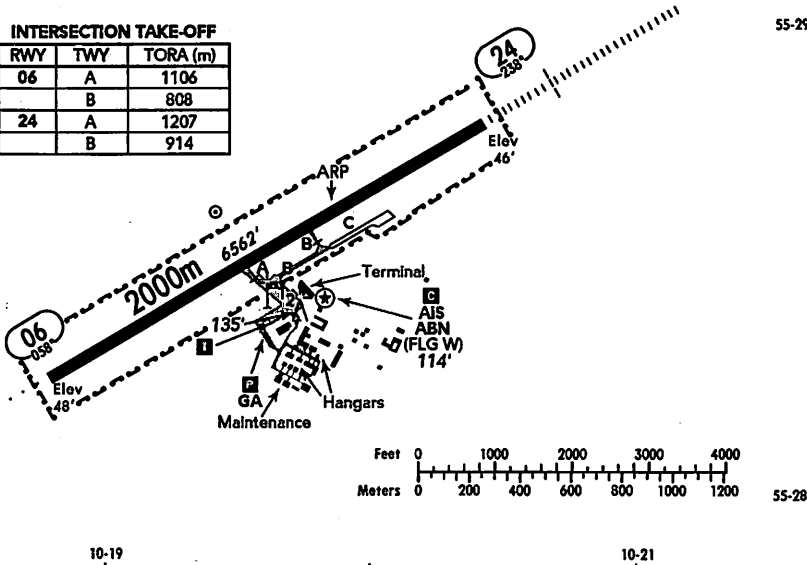
10-21

LEGEND

--- Limit of manoeuvring area

INTERSECTION TAKE-OFF

RWY	TWY	TORA (m)
06	A	1106
	B	808
24	A	1207
	B	914



55-29

55-29

55-28

55-28

10-19

10-21

✈ 1 ✕ 🚗 TAXI

☁ ABN - ALS - PAPI - THRL - RL - TWYL - WDI - OBSTL.

RWY No	Dimension (m) - Surface	TORA (m)	LDA (m)	Strength	Lights
06 24	2000 x 45 Asphalt	2000	2000	PCN 50/R/D/X/U	☁

CAUTION:

Pay attention to parachute activity.