

JEPPESEN

05 AUG 11

19-1

LOLLAND FALSTER

MARIBO

DENMARK

EKMB

Elev 16'/5m

N54 42.0

E011 26.4

1.8 NM E Rødby

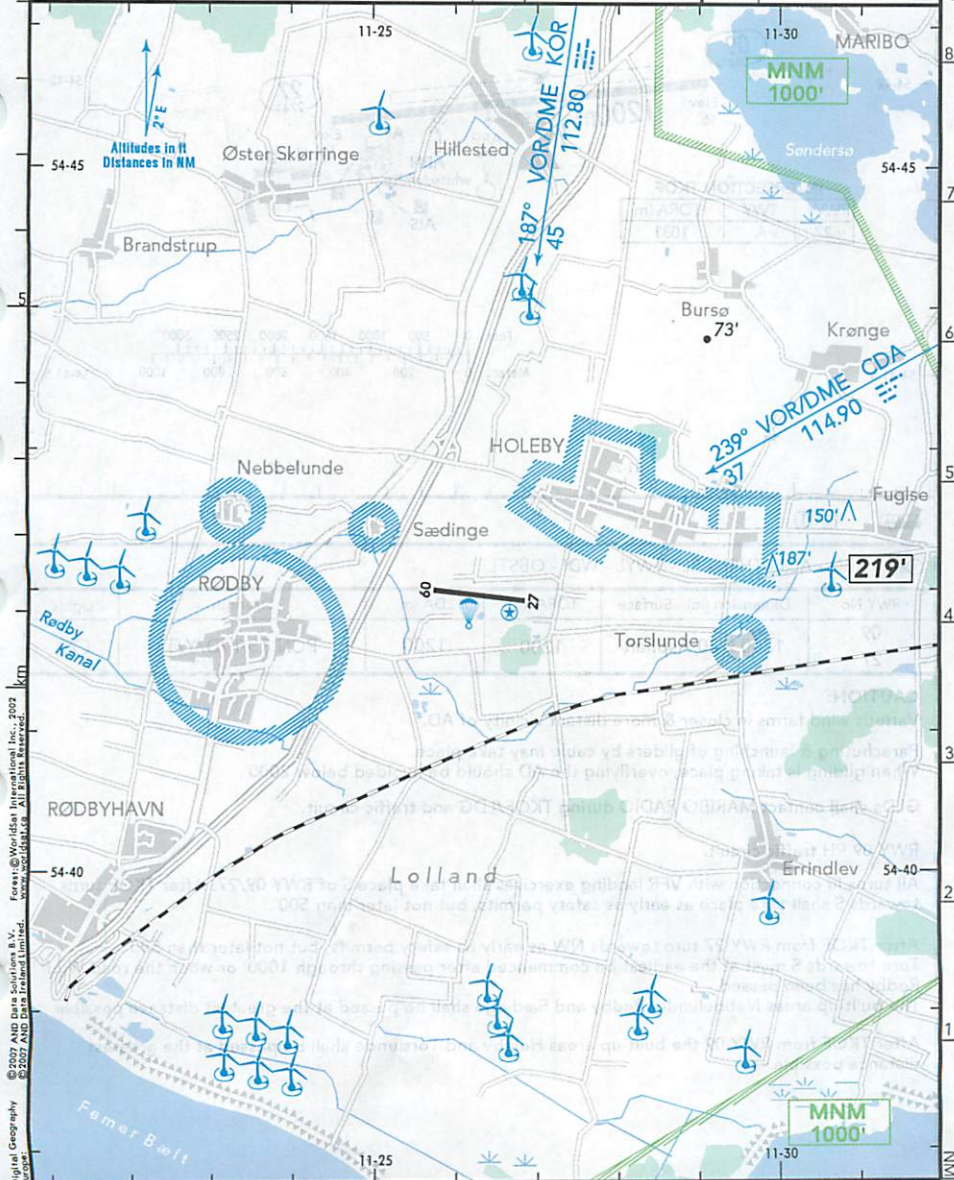
(Radio)

MARIBO RADIO 130.57

RWY	ILS	RWY	ILS

SCALE 1:100 000

274-53



© 2007 AND Data Solutions B.V.
 © 2007 AND Data Solutions Limited.
 Digital Geography
 Forent © Worldair International Inc., 2002
 www.worldairdata.com
 All rights reserved.

CHANGES: VAR - RWY Designation - Direction Arrows.

© JEPPESEN, 2008, 2011. ALL RIGHTS RESERVED.

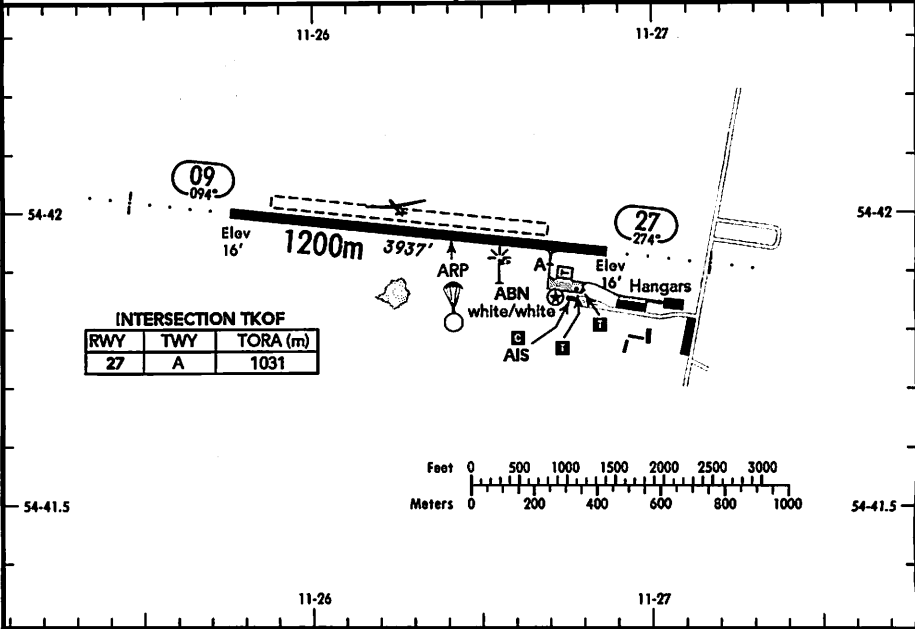
**LOLLAND FALSTER
MARIBO
DENMARK**

19-2 05 AUG 11

JEPPESEN



(FIS)
KØBENHAVN INFORMATION **127.07**



INTERSECTION TKOF

RWY	TWY	TORA (m)
27	A	1031

CAMERA TAXI

ABN - ALS - THRL - RL - TWYL - WDI - OBSTL.

RWY No	Dimension (m) - Surface	TORA (m)	LDA (m)	Strength	Lights
09 27	1200 x 30 Asphalt	1200	1200	PCN 13/F/D/Y/T	

CAUTION:

Various wind farms in closer & more distant vicinity of AD.
Parachuting & launching of gliders by cable may take place.
When gliding is taking place, overflying the AD should be avoided below 2000'.
GLDs shall contact MARIBO RADIO during TKOF/LDG and traffic circuit.

RWY 09 RH traffic circuit.

All turns in connection with VFR landing exercises shall take place S of RWY 09/27. After TKOF turns towards S shall take place as early as safety permits, but not later than 500'.

After TKOF from RWY 27 turn towards NW as early as safety permits, but not later than 500'.
Turn towards S must at the earliest be commenced after passing through 1000' or when the road W of Rødby has been passed.
The built-up areas Nebbelunde, Rødby and Sædinge shall be passed at the greatest distance possible.

After TKOF from RWY 09 the built-up areas Holeby and Torslunde shall be passed at the greatest distance possible.