

(APP) FL 150/40NM

AARHUS APPROACH 119.27 (da, en)

EKAH

Elev 82' / 25 m

N56 18.0

E010 37.1

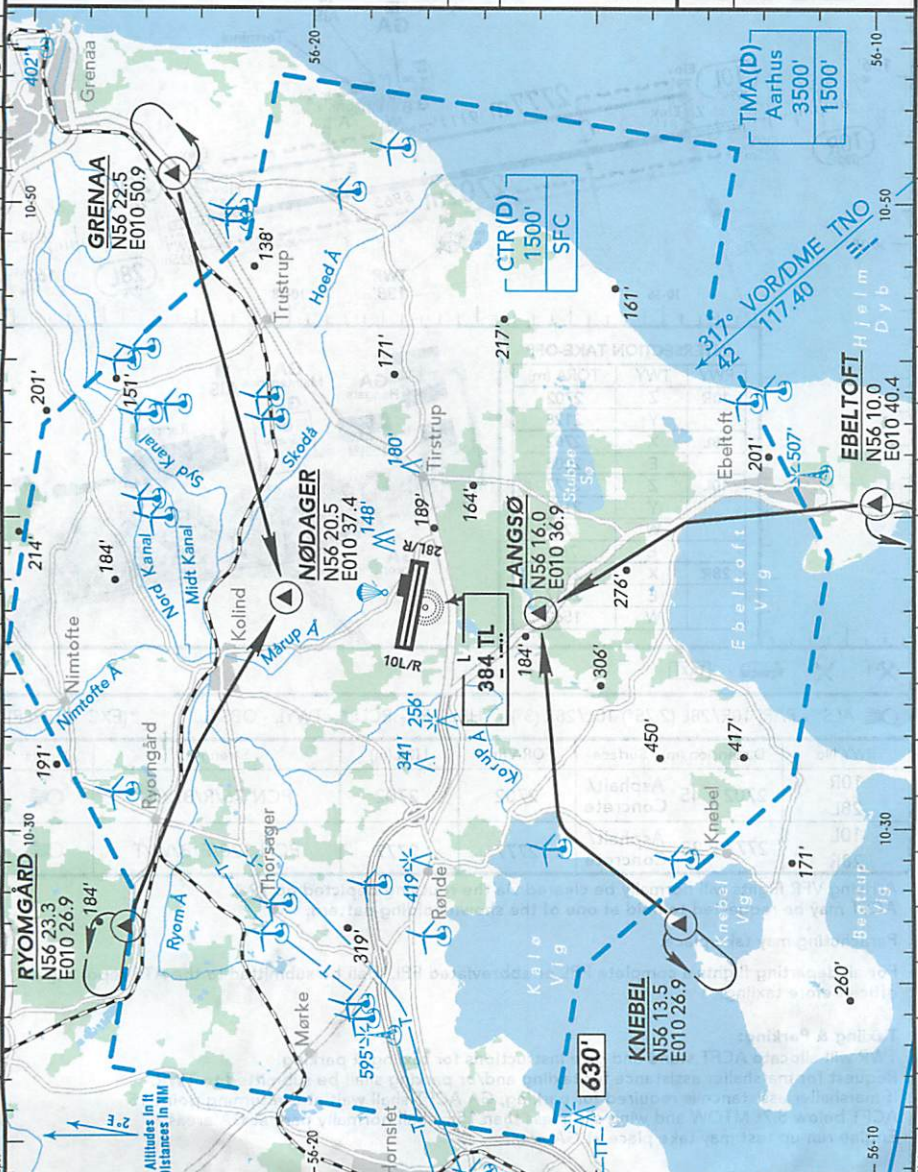
19 NM NE Aarhus

(TWR) 4000'/25NM

AARHUS TOWER 118.52 (da, en)

*ILS/DME freq paired.

RWY	ILS	RWY	ILS
10R	111.90 AAR 099°	28L*	111.10 TR 279°



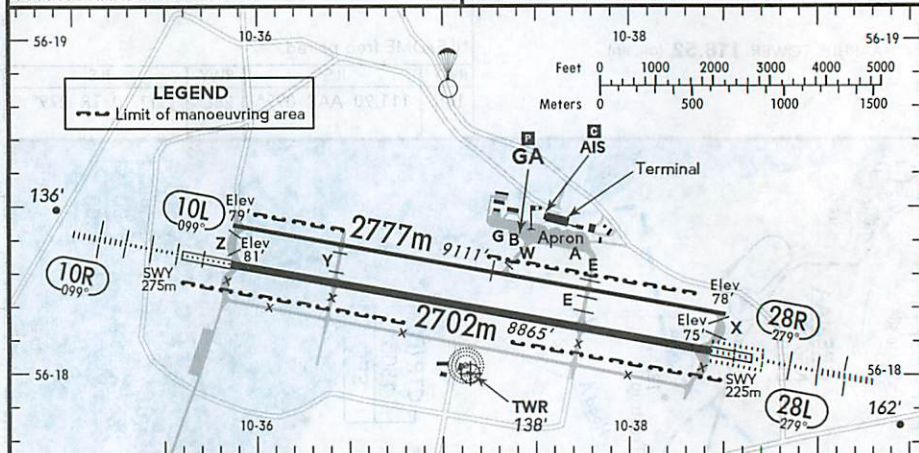
2.5-98

© 2001 AND Data Solutions B.V. Forast/Worldair International Inc., 2002
© 2003 AND Data Solutions Limited. All rights reserved.
Digital Geography Europe

(FIS)

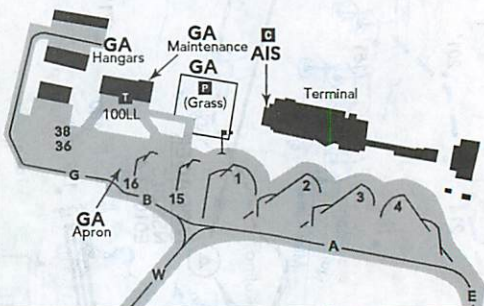
AARHUS HANDLING **131.55**

AARHUS APPROACH **119.27**



INTERSECTION TAKE-OFF

RWY	TWY	TORA (m)
10R	Z	2702
	Y	2128
28L	X	2702
	E	2008
10L	Z	2777
	Y	2177
	W	1263
	E	782
28R	X	2777
	E	2017
	W	1562



✈️ 1 ✂️ 🚗 TAXI

☪️ ALS* - PAPI 10R/28L (2.75°) 10L/28R (3°) - THRLL - RL - RCLL* - TWYL - OBSTL. *(EXC 10L/28R)

RWY No	Dimension (m) - Surface	TORA (m)	LDA (m)	Strength	Lights
10R 28L	2702 x 45 Asphalt/ Concrete	2702	2702	PCN 76/R/B/X/U	☪️
10L 28R	2777 x 23 Asphalt/ Concrete	2777	2777	PCN 120/F/B/W/T	☪️

Arriving VFR flights will normally be cleared via the routing depicted on 19-1.
ACFT may be requested to hold at one of the shown holding pattern.

Parachuting may take place.

For all departing flights a complete FPL or abbreviated FPL shall be submitted to the ATS reporting office before taxiing.

Taxiing & Parking:

TWR will allocate ACFT stand and give instructions for taxiing & parking.
Request for marshaller assistance for taxiing and/or parking shall be submitted to TWR.
If marshaller assistance is required for parking, GA ACFT shall wait at the turning point 15.
ACFT below 5.7t MTOW and wing span less than 15m shall normally park at GA areas.
Engine run-up test may take place at GA-area.