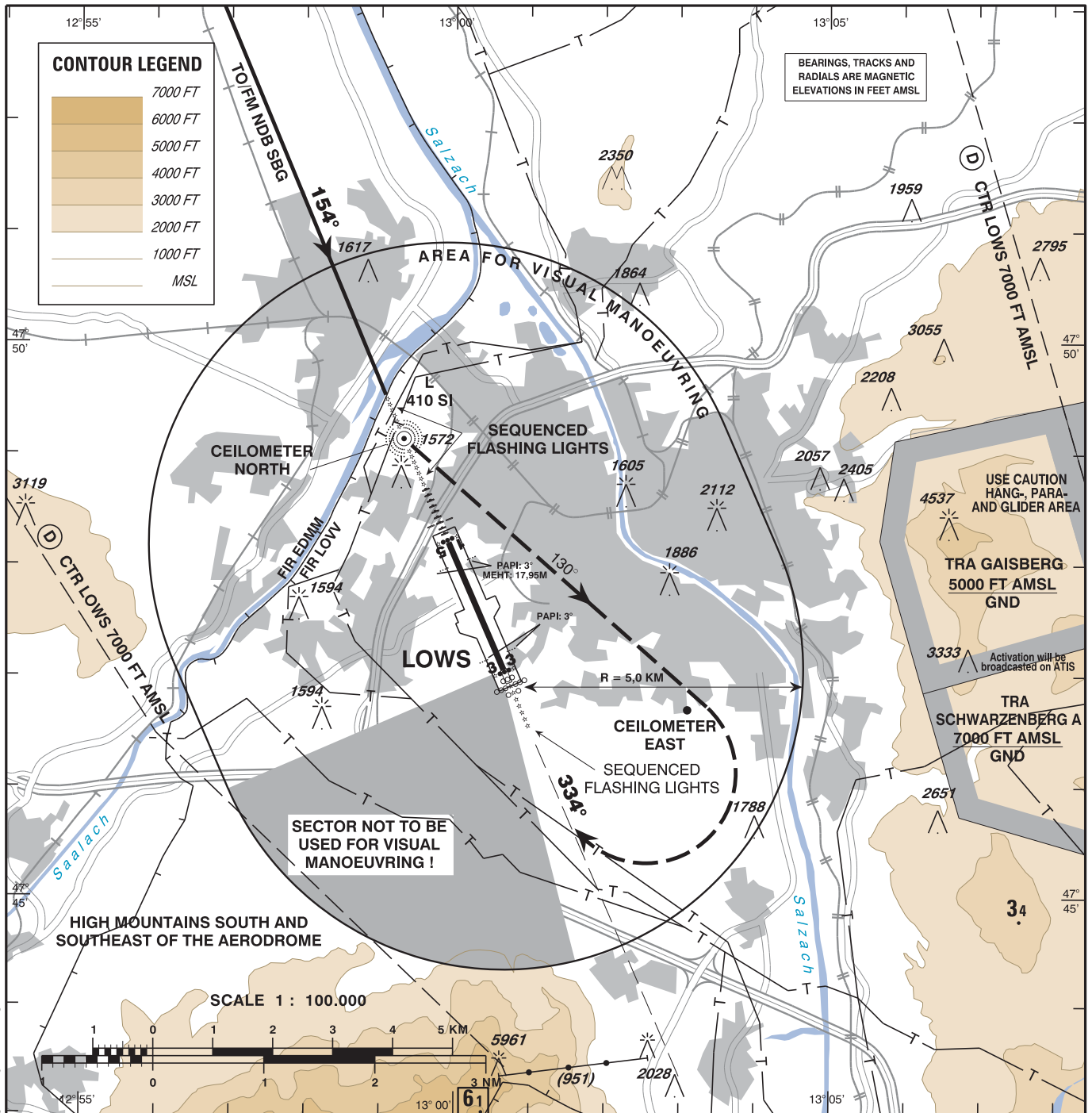


**VISUAL
APPROACH
CHART - ICAO**

VAR 3° E AD ELEV 1411 FT

RADAR 123.725 MHZ
134.975 MHZ
TOWER 118.100 MHZ
ATIS 133.325 MHZ

SALZBURG
ÖSTERREICH AUSTRIA



CHANGE: EDITORIAL

OCA	CIRCLING	
A/C CATEGORY	MNM REQUIRED FLIGHT VISIBILITY	
A	2450 FT AMSL	2,8 KM
B		
C	2550 FT AMSL	3,7 KM
D		4,6 KM

CIRCLING PROCEDURE RWY 33:

Complete a published instrument approach to RWY 15;
After passing L SI proceed VISUALLY approximately on track 130° 3,5 NM followed by right turn for positioning on to final RWY 33.