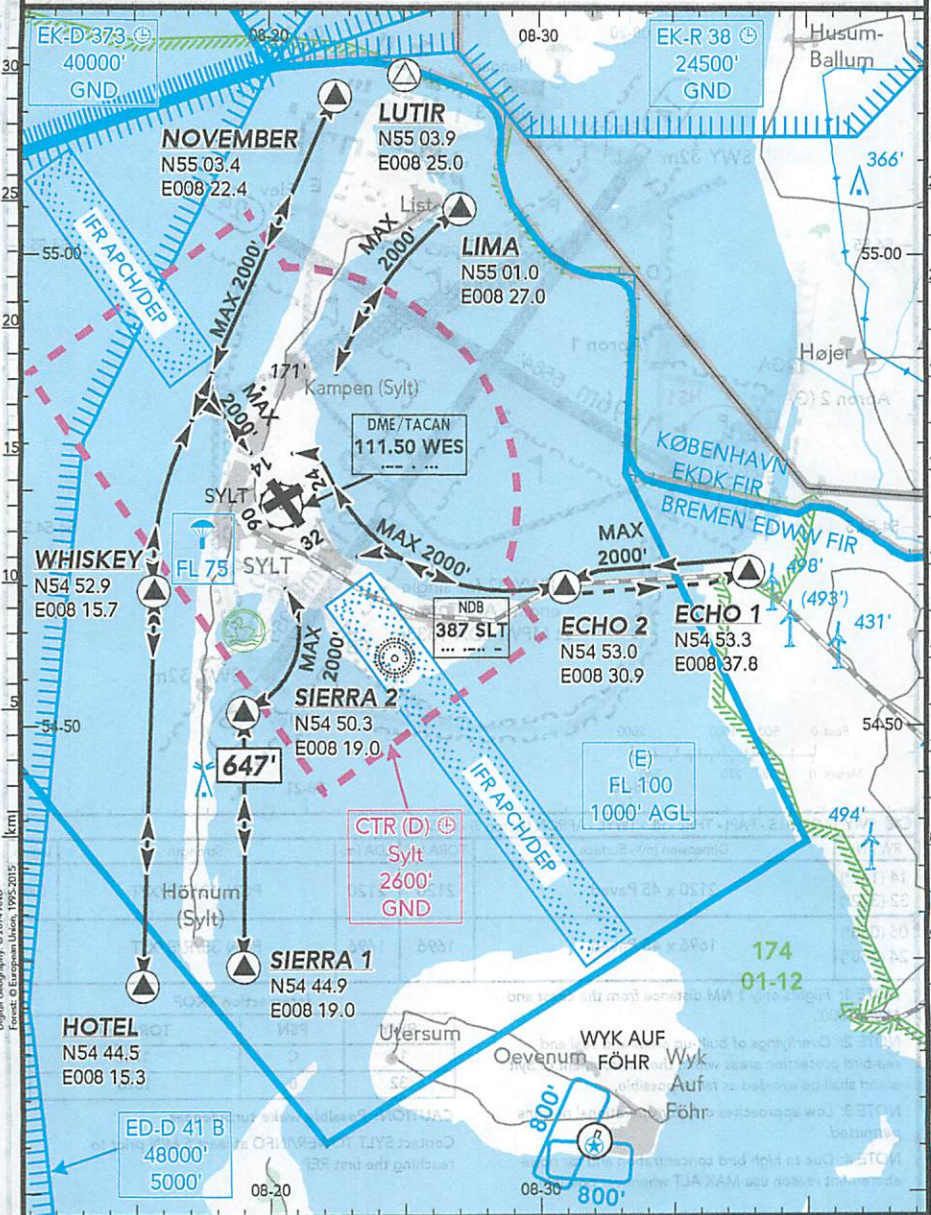


LOCATION Elev 51' / 16m N54 54.7 E008 20.6	FIS BREMEN INFORMATION 125.100	ATIS ATIS 118.400
	TOWER SYLT TOWER 119.750 <sup>(1) (3) (4)</sup> (ge, en)	AFIS SYLT INFO 122.000 <sup>(1) (2)</sup> (ge, en) 119.750 <sup>(1) (3) (4)</sup> (ge, en)

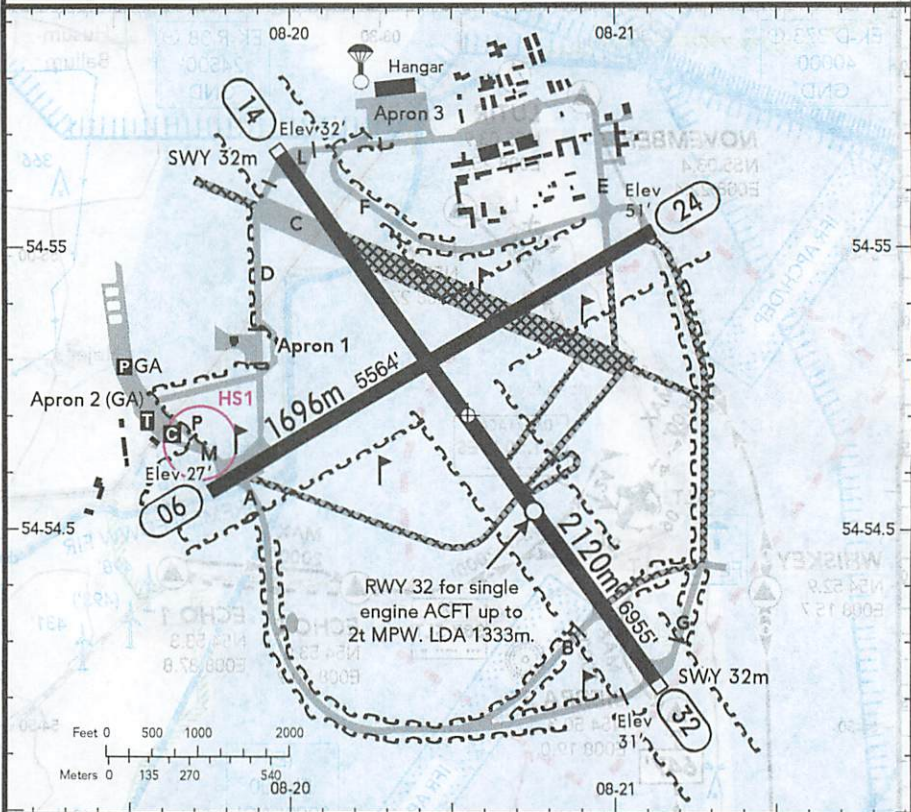
(1) VDF (2) Outside TWR op hr, 25 NM / 4000 AGL, O/R. (3) Outside TWR op hr, 25 NM / 4000 AGL.  
(4) 25 NM / 4000 AGL



LOCATION Elev 51' / 16m N54 54.7 E008 20.6	ATIS ATIS 118.400	TOWER SYLT TOWER 119.750 <sup>(1) (3) (4)</sup> (ge, en)
AFIS SYLT INFO 122.000 <sup>(1) (2)</sup> (ge, en) 119.750 <sup>(1) (3) (4)</sup> (ge, en)	ADMITTED AIRCRAFT	

<sup>(1)</sup> VDF <sup>(2)</sup> Outside TWR op hr, 25 NM / 4000 AGL, O/R. <sup>(3)</sup> Outside TWR op hr, 25 NM / 4000 AGL.

<sup>(4)</sup> 25 NM / 4000 AGL



SCALE 1:25000

RWY 14/32: ALS - PAPI - THRL - RL - TWYL - APRON (Apron 3) - OBSTL

RWY No	Dimension (m) - Surface	TORA (m)	LDA (m)	Strength	Lights
14 (142°) 32 (322°)	2120 x 45 Paved	2120	2120	PCN 80/R/B/X/T	☉
06 (058°) 24 (238°)	1696 x 45 Paved	1696	1696	PCN 35/R/B/X/T	---

NOTE 1: Flights only 1 NM distance from the coast and MNM 1000'.

NOTE 2: Overflights of built-up areas and seal and sea-bird protection areas within the environment of Sylt island shall be avoided as far as possible.

NOTE 3: Low approaches only for operational reasons permitted.

NOTE 4: Due to high bird concentration and for noise abatement reason use MAX ALT whenever possible.

#### Intersection TKOF

RWY	PSN	TORA (m)
14	C	1748
32	B	1826

CAUTION: Possible wake turbulences.

Contact SYLT TOWER/INFO at least 5 MIN prior to reaching the first REP.