

EDWR

Elev 3' / 1m

N53 35.7

E006 42.6

0.54 NM E Borkum

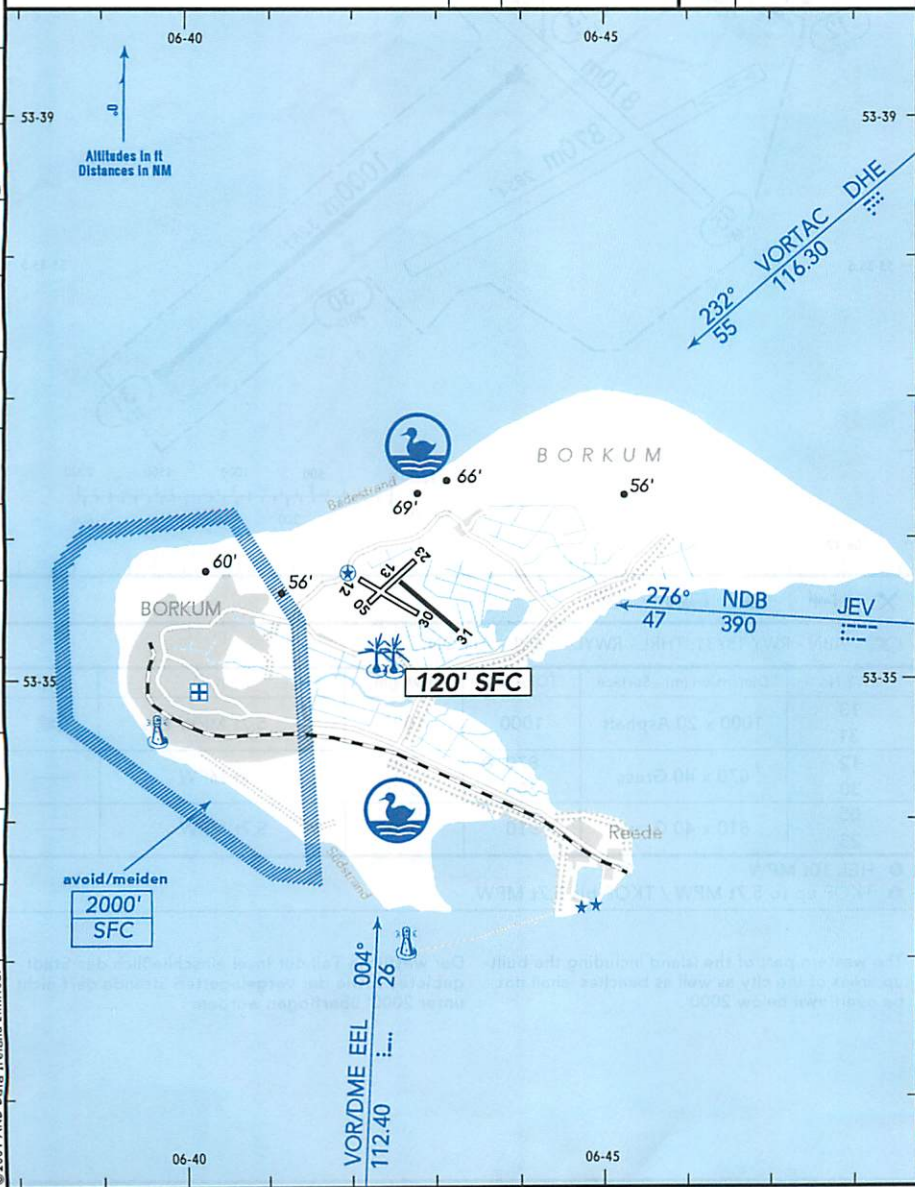
(AFIS) 15 NM/3000' SFC VDF

BORKUM INFO **123.00** (en, ge)

RWY	ILS	RWY	ILS

SCALE 1:100 000

462-3225

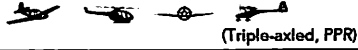


Digital Geography Europe
© 2001 AND Data Solutions
© 2001 AND Data Ireland Limited.

BORKUM
BORKUM
GERMANY

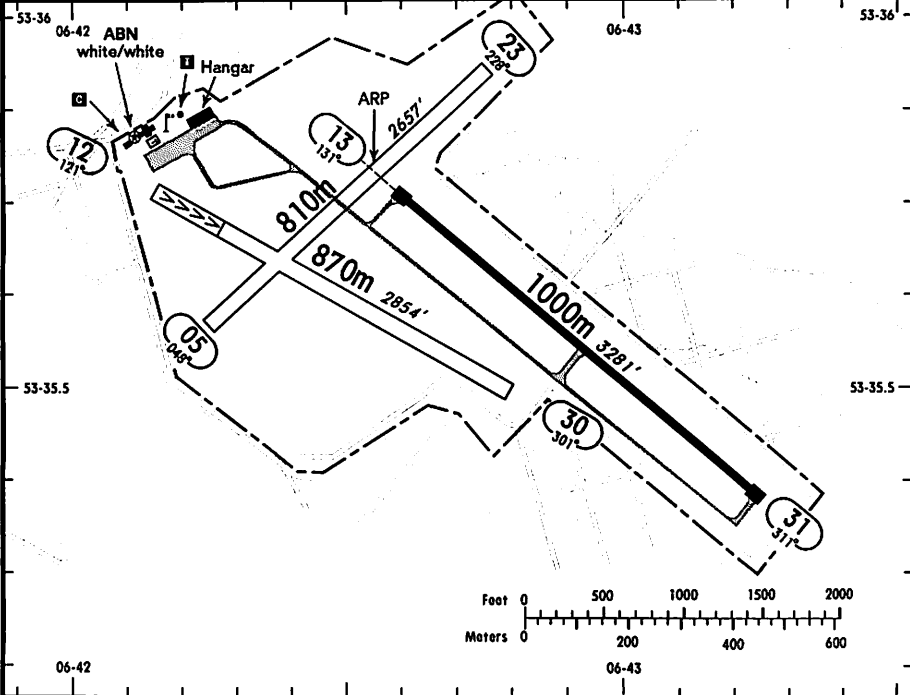
19-2 4 MAR 05

JEPPESSEN



(FIS)

BREMEN INFORMATION 125.10



ABN - RWY 13/31: THRL - RWYL - TWYL - APRON.

RWY No	Dimension (m) - Surface	TORA (m)	LDA (m)	Strength	Lights
13 31	1000 x 20 Asphalt	1000	1000	5.7t MPW ①	☉
12 30	870 x 40 Grass	870 ②	700 870	2t MPW	—
05 23	810 x 40 Grass	810	810	5.7t MPW	—

① HEL 10t MPW.

② TKOF up to 5.7t MPW / TKOF bis 5.7t MPW.

The western part of the Island including the built-up areas of the city as well as beaches shall not be overflown below 2000'.

Der westliche Teil der Insel einschließlich des Stadtgebietes sowie der vorgelagerten Strände darf nicht unter 2000' überfliegen werden.