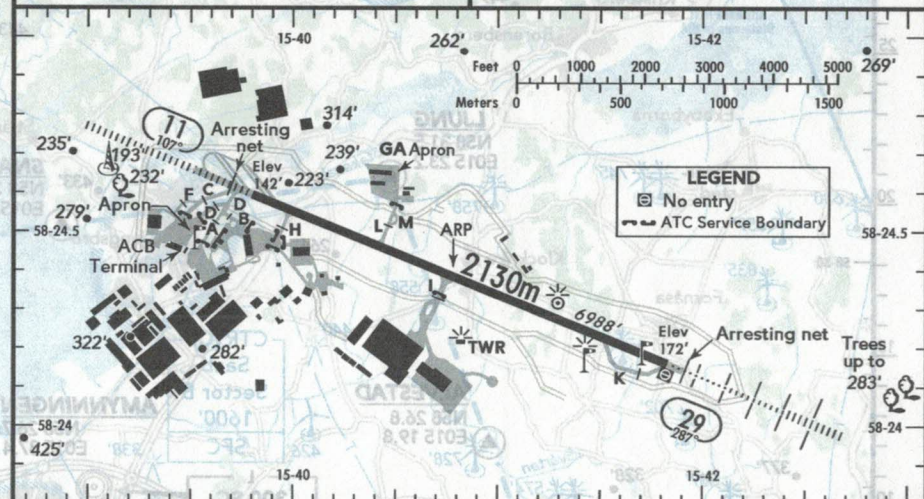


SAAB

SWEDEN

(FIS)

SWEDEN CONTROL 118.400



X TAXI

ALS - PAPI 11 (3.25°), 29 (2.86°) - THRL - RL - TWYL - WDI.

RWY No	Dimension (m) - Surface	TORA (m)	LDA (m)	Strength	Lights
11 29	2130 x 40 Asphalt	2130	2130	PCN 35/F/B/X/T	

Intense training activities with MIL jet ACFT & HEL outside Malmen & Saab CTR (C).
RWY 29: RH traffic circuit.
During op hr of Malmen TWR, CTR (C) Saab Sector B is delegated to Malmen TWR.

Arresting net outside RWY ends erected when ATS is CLSD.
Lights in the vicinity of AD may be disturbing during approach to RWY 11.
TWYs A, B & H for MIL use only.
RWY 11/29 also to be used as HEL landing area.

VFR Flights with ACFT with MTOW 4t

If ATS not informs differently, RH turn shall be initiated when reaching 500' after TKOF RWY 29.
Valid also when ATS is closed.
TKOF RWY 29 shall be made from TWY 'I' or east thereof.
During touch & go LDG RWY 11 touchdown shall be made 600m from THR.
When ATS is closed TKOF RWY 11 shall be made 600m from THR to get full visibility.
When ATS is closed position reports and intentions should be transmitted on frequency 118.800 before using the manoeuvring area or entering the traffic circuit.
TKOF RWY 29 & LDG RWY 11 accepted only when wind conditions or other flight safety reasons so require.

Noise Abatement Procedures

Over the central parts of Linköping and the suburban areas close to the AD, ACFT should not be operated below 2000', except when necessary for TKOF and LDG.
The farm at Bökstad situated NE of THR 29 shall be avoided during TKOF, LDG and in traffic circuit.
ACFT shall strictly adhere to assigned route and be operated in such a manner that unnecessary noise disturbances are not caused.

COM Failure:

- Squawk 7600,
- enter CTR via OSTR HARG - Holding RYSTAD at 1500' or below to traffic circuit. Transmit blind your intentions.
- flash LDG lights & watch TWR for optical signals.

2 NM E Linköping

Elev 173.25 m

N28 24.4

E012 40.8

SAAB TOWER 118.800* 133.100 (sw, en)

153.400 158.700 (sw, en)

MALMEN TOWER 129.800 (sw, en)

CTR Saab (C) Sector B during op hr of Malmen TWR:

VDP 11 108.70 121 107.52 108.10 21 58.7

ILS 11 108.70 121 107.52 108.10 21 58.7

ILS 11 108.70 121 107.52 108.10 21 58.7

ILS 11 108.70 121 107.52 108.10 21 58.7

ILS 11 108.70 121 107.52 108.10 21 58.7

ILS 11 108.70 121 107.52 108.10 21 58.7

ILS 11 108.70 121 107.52 108.10 21 58.7

ILS 11 108.70 121 107.52 108.10 21 58.7

ILS 11 108.70 121 107.52 108.10 21 58.7

ILS 11 108.70 121 107.52 108.10 21 58.7

ILS 11 108.70 121 107.52 108.10 21 58.7

ILS 11 108.70 121 107.52 108.10 21 58.7

ILS 11 108.70 121 107.52 108.10 21 58.7

ILS 11 108.70 121 107.52 108.10 21 58.7

ILS 11 108.70 121 107.52 108.10 21 58.7

ILS 11 108.70 121 107.52 108.10 21 58.7

ILS 11 108.70 121 107.52 108.10 21 58.7

ILS 11 108.70 121 107.52 108.10 21 58.7

ILS 11 108.70 121 107.52 108.10 21 58.7

ILS 11 108.70 121 107.52 108.10 21 58.7

ILS 11 108.70 121 107.52 108.10 21 58.7

ILS 11 108.70 121 107.52 108.10 21 58.7

ILS 11 108.70 121 107.52 108.10 21 58.7

ILS 11 108.70 121 107.52 108.10 21 58.7

ILS 11 108.70 121 107.52 108.10 21 58.7

ILS 11 108.70 121 107.52 108.10 21 58.7

ILS 11 108.70 121 107.52 108.10 21 58.7

ILS 11 108.70 121 107.52 108.10 21 58.7

ILS 11 108.70 121 107.52 108.10 21 58.7

ILS 11 108.70 121 107.52 108.10 21 58.7

ILS 11 108.70 121 107.52 108.10 21 58.7

ILS 11 108.70 121 107.52 108.10 21 58.7

ILS 11 108.70 121 107.52 108.10 21 58.7

ILS 11 108.70 121 107.52 108.10 21 58.7

ILS 11 108.70 121 107.52 108.10 21 58.7

ILS 11 108.70 121 107.52 108.10 21 58.7

ILS 11 108.70 121 107.52 108.10 21 58.7

ILS 11 108.70 121 107.52 108.10 21 58.7

ILS 11 108.70 121 107.52 108.10 21 58.7

ILS 11 108.70 121 107.52 108.10 21 58.7

ILS 11 108.70 121 107.52 108.10 21 58.7

ILS 11 108.70 121 107.52 108.10 21 58.7

ILS 11 108.70 121 107.52 108.10 21 58.7

ILS 11 108.70 121 107.52 108.10 21 58.7

ILS 11 108.70 121 107.52 108.10 21 58.7

ILS 11 108.70 121 107.52 108.10 21 58.7

ILS 11 108.70 121 107.52 108.10 21 58.7

ILS 11 108.70 121 107.52 108.10 21 58.7

ILS 11 108.70 121 107.52 108.10 21 58.7

ILS 11 108.70 121 107.52 108.10 21 58.7

ILS 11 108.70 121 107.52 108.10 21 58.7

ILS 11 108.70 121 107.52 108.10 21 58.7

ILS 11 108.70 121 107.52 108.10 21 58.7

ILS 11 108.70 121 107.52 108.10 21 58.7

ILS 11 108.70 121 107.52 108.10 21 58.7

ILS 11 108.70 121 107.52 108.10 21 58.7