

Elev **607'**/185m

N51 43.3

E019 23.9

3.2 NM SW Łódź

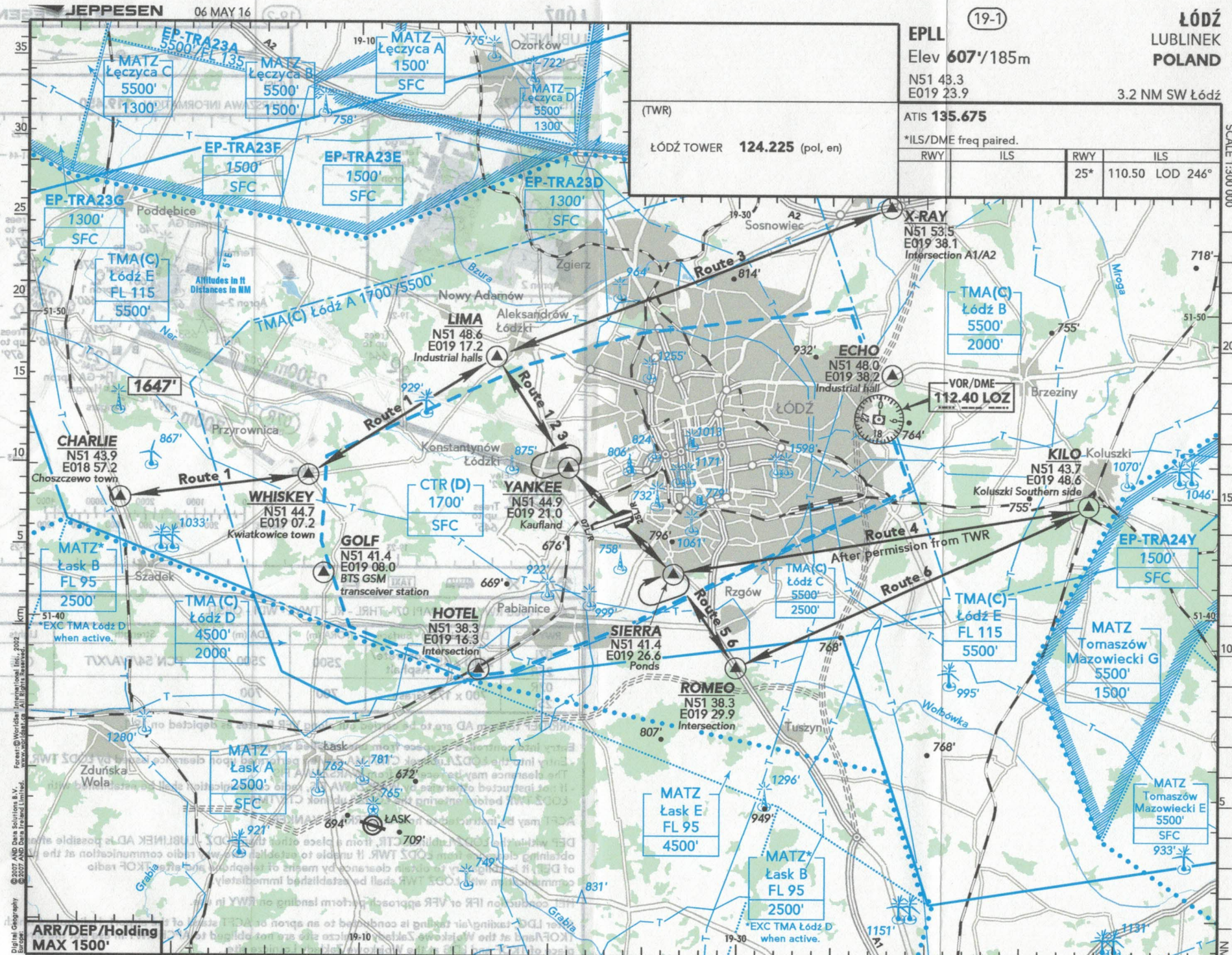
ATIS **135.675**

*ILS/DME freq paired.

(TWR)

ŁÓDŹ TOWER **124.225** (pol, en)

RWY	ILS	RWY	ILS
		25*	110.50 LOD 246°



SCALE 1:200 000

22

Digital Geography
© 2007 AND Data Solutions B.V.
© 2007 AND Data Solutions B.V.
Forest: © WorldSat International Inc., 2002

**ARR/DEP/Holding
MAX 1500'**

CHANGES: Airspace - REPs & Routes - OBST.

[illegible]

Radio Communication Failure in VFR flights:

If radio communication fails before reaching the ŁÓDŹ/Lubliniek CTR/TMA, entry is forbidden.

If radio communication fails in flight after obtaining clearance for entry into the ŁÓDŹ/Lubliniek CTR/TMA, the crew shall:

a). when ARR and APCH from the northern side of the AD:

- make an APCH to reach YANKEE and await visual signals given from ŁÓDŹ TWR;
- show all ACFT navigation, warning and landing lights during arrival, and holding;
- after receiving a green visual continuous signal execute the shortest possible APCH and land on the most suitable RWY depending on weather conditions;
- after receiving a red visual signal hold over YANKEE until receiving a continuous green visual signal and then execute the shortest possible APCH and land on the most suitable RWY depending on weather conditions;
- if no signals have been received from ŁÓDŹ TWR, hold over YANKEE for 10 minutes and then execute the shortest possible APCH and land on the most suitable RWY depending on weather conditions;
- after landing vacate the RWY immediately into the available TWY and wait for the "FOLLOW ME" car.

b). when ARR and APCH from the southern side of the AD:

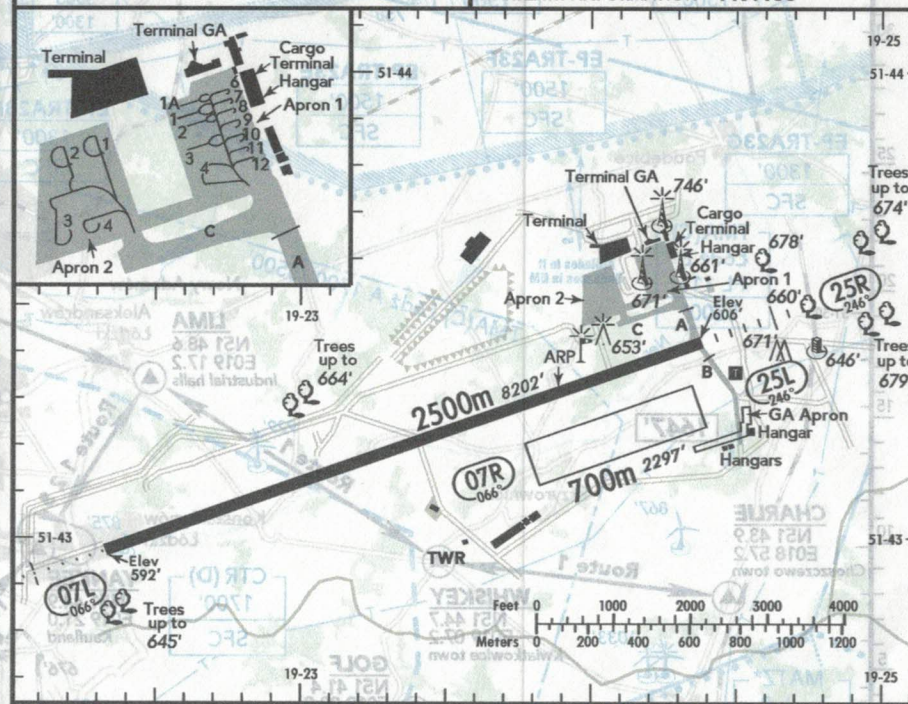
- make an APCH to reach SIERRA and await visual signals given from ŁÓDŹ TWR;
- show all ACFT navigation, warning and landing lights during arrival, and holding;
- after receiving a green visual continuous signal execute the shortest possible APCH and land on the most suitable RWY depending on weather conditions;
- after receiving a red visual signal hold over SIERRA until receiving a continuous green visual signal and then execute APCH as short as possible and land on the most suitable RWY depending on weather conditions;
- if no signals have been received from ŁÓDŹ TWR hold over SIERRA for 10 minutes and then execute the shortest possible APCH and land on the most suitable RWY depending on weather conditions;
- after landing vacate the RWY immediately into the available TWY and wait for the "FOLLOW ME" car.

If possible, hold over YANKEE/SIERRA point at 1500' AMSL, paying attention to flights in the traffic circuit.

These rules also apply to gliders and other non-powered ACFT, if possible.

ATIS 135.675

(FIS)
WARSZAWA INFORMATION 119.450



Paved RWY: ALS - PAPI 07 - THRL - RL - TWYL - WDI - OBSTL

RWY No	Dimension (m) - Surface	TORA (m)	LDA (m)	Strength	Lights
07L 25R	2500 x 45 Concrete/Asphalt	2500	2500	PCN 54/F/A/X/T	
07R 25L	700 x 175 Grass	700	700		

ARR/DEP to/from AD are to be carried out along VFR Routes as depicted on 19-1.

Entry into controlled airspace from uncontrolled airspace:

- Entry into the ŁÓDŹ/Lubliniek CTR/TMA may be performed upon clearance issued by ŁÓDŹ TWR. The clearance may be received from WARSZAWA FIS,
- If not instructed otherwise by WARSZAWA FIS, radio communication shall be established with ŁÓDŹ TWR before entering the ŁÓDŹ/Lubliniek CTR/TMA.

ACFT may be instructed to hold at SIERRA or YANKEE.

DEP within the ŁÓDŹ/Lubliniek CTR, from a place other than ŁÓDŹ - LUBLINEK AD is possible after obtaining clearance from ŁÓDŹ TWR. If unable to establish two-way radio communication at the place of DEP, it is obligatory to obtain clearance by means of telephone and after TKOF radio communication with ŁÓDŹ TWR shall be established immediately.

HEL conduction IFR or VFR approach perform landing on RWY in use.

After LDG, taxiing/air taxiing is conducted to an apron or ACFT stand of the airport. Helicopters which TKOF/land at the Wojskowe Zakłady Lotnicze site are not obliged to APCH RWY in use but the direct place of TKOF and LDG at the Wojskowe Zakłady Lotnicze site.