

Radio Communication Failure

If radio communication fails before reaching the KATOWICE/Pyrozowice CTR, entry is forbidden.

If radio communication fails in flight after obtaining clearance for entry into the KATOWICE/Pyrozowice CTR:

APCH from N:

- make an APCH to reach NOVEMBER via WHISKEY and await visual signals given from TWR;
- switch on all ACFT navigation, warning and landing lights;
- after receiving a continuous green visual signal execute the shortest possible APCH and land on the most suitable RWY depending on weather conditions;
- after receiving a red visual signal hold over NOVEMBER until receiving a continuous green visual signal and then execute the shortest possible APCH and land on the most suitable RWY depending on weather conditions;
- if no signals have been received from TWR, hold over NOVEMBER for 5 minutes and then execute the shortest possible APCH and land on the most suitable RWY depending on weather conditions;
- after LDG vacate RWY immediately into AVBL TWY and wait for the "FOLLOW ME" car.

APCH from S:

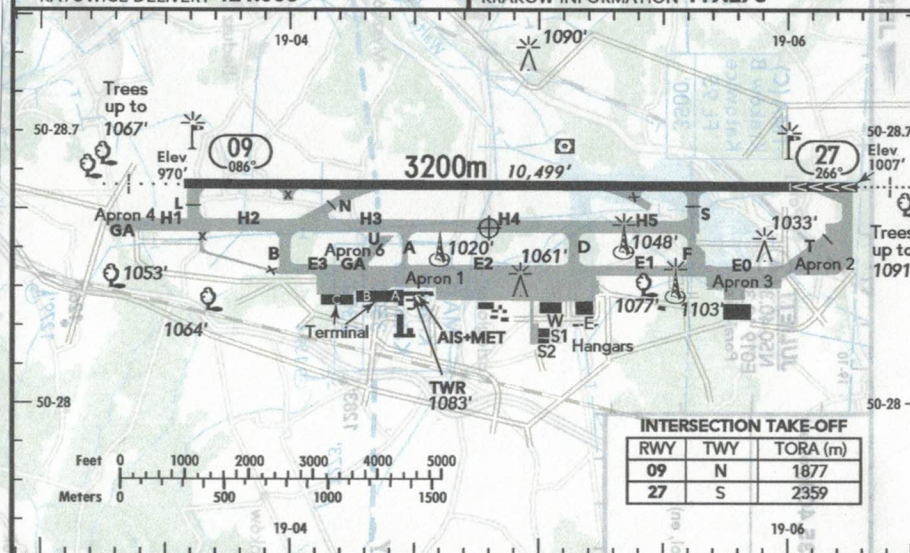
- make an APCH to reach X-RAY via GOLF and await visual signals given from TWR;
- switch on all ACFT navigation, warning and landing lights;
- after receiving a continuous green visual signal execute the shortest possible APCH and land on the most suitable RWY depending on weather conditions;
- after receiving a red visual signal hold over X-RAY until receiving a continuous green visual signal and then execute the shortest possible APCH and land on the most suitable RWY depending on weather conditions;
- if no signals have been received from TWR hold over X-RAY for 5 minutes and then execute the shortest possible APCH and land on the most suitable RWY depending on weather conditions;
- after LDG vacate RWY immediately into AVBL TWY and wait for the "FOLLOW ME" car.

ATIS 120.225

(FIS)

KATOWICE DELIVERY 121.800

KRAKÓW INFORMATION 119.275



INTERSECTION TAKE-OFF		
RWY	TWY	TORA (m)
09	N	1877
27	S	2359



ALS - PAPI - THRL - RL - RCLL - TWYL - APRON - WDI - OBSTL

RWY No	Dimension (m) - Surface	TORA (m)	LDA (m)	Strength	Lights
09	3200 x 45 Concrete	2880	3200	PCN 70/R/A/W/T	
27		3200	2880		

Airport Duty Operational Officers advises Katowice TWR about the safety of taxiing on parts of TWY normally not visible from the TWR.

In the case of congestion of air traffic, an ACFT may expect holding over one of the following points: X-RAY or NOVEMBER. Holding procedure shall be conducted at an altitude not higher than 2000', unless cleared otherwise by ATC.

Movement on Apron (crews and passengers) is authorised only when accompanied by the handling agent's representative.

ACFT manoeuvres on Aprons to be carried out with MIN power.

All persons discharging their duties within AD movement area are obliged to wear distinctive yellow or orange tops of their outdoor clothing or vests, with fluorescent elements.