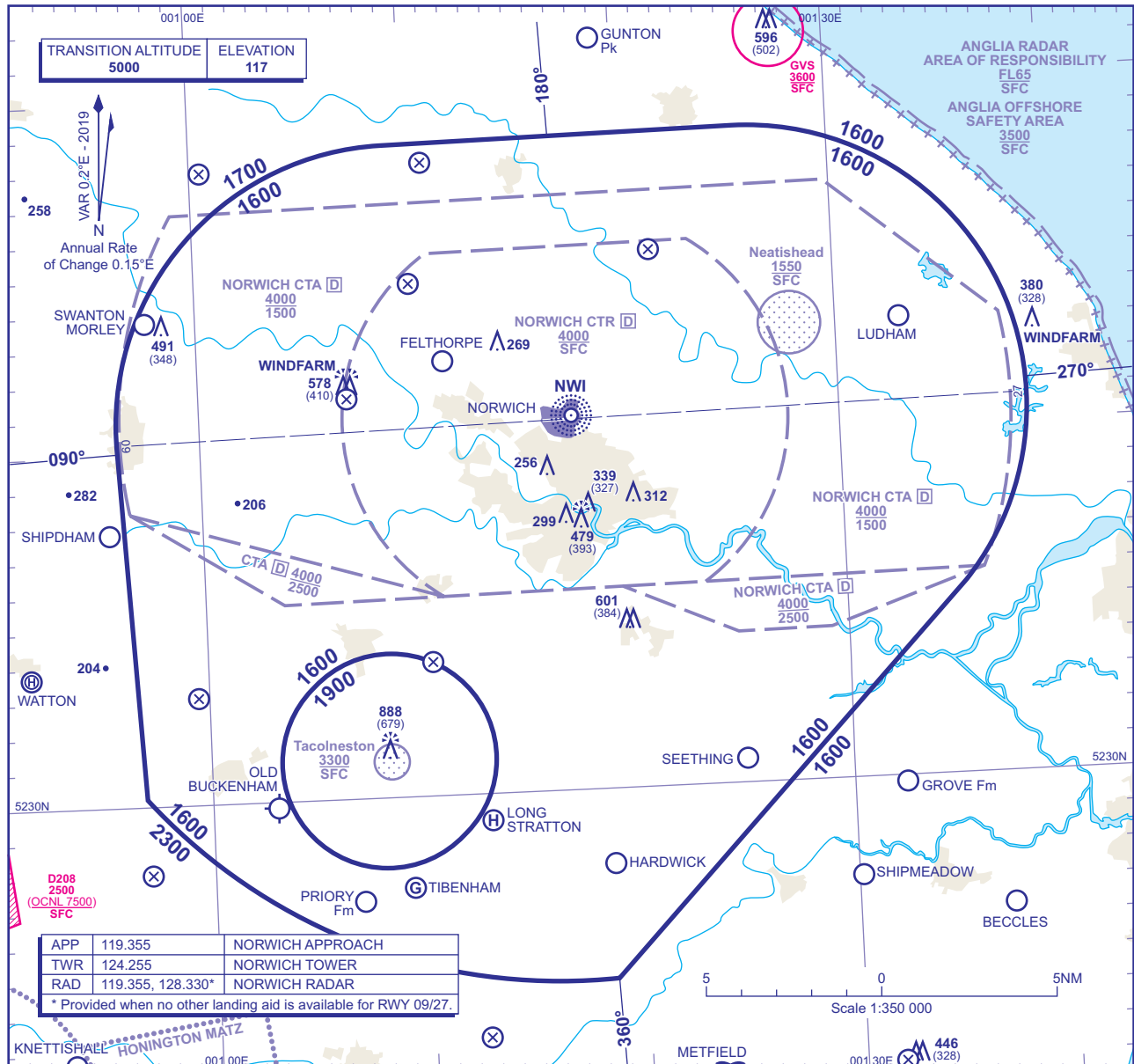


**ATC SURVEILLANCE MINIMUM  
ALTITUDE CHART - ICAO**BEARINGS, TRACKS AND RADIALS ARE MAGNETIC  
ELEVATIONS IN FEET AMSL  
HEIGHTS IN FEET AGL**NORWICH****MINIMUM INITIAL ALTITUDE**

Within the ATC Surveillance Minimum Altitude area the minimum initial altitude to be allocated by the approach surveillance controller is **1600** in the sector defined by the lateral limits; 524835N 0010905E - 524842N 0012534E thence clockwise by an arc of a circle radius 8NM centred on 524043N 0012542E - 523528N 0013537E - 522436N 0011835E - thence by an arc of a circle radius 16NM centred on 524033N 0011658E - 523015N 0005655E - 524005N 0005609E thence clockwise by an arc of a circle radius 8NM centred on 524035N 0010916E - 524835N 0010905E except, **1900** in the sector defined by the lateral limits; 523309N 0010446E - 523315N 0010457E thence clockwise by an arc of a circle radius 3NM centred on 523106N 0010822E to 522857N 0011147E - 522851N 0011136E thence clockwise by an arc of a circle radius 3NM centred on 523100N 0010811E - 523309N 0010446E.

**OUTSIDE THE DESIGNATED ATC SURVEILLANCE MINIMUM ALTITUDE AREA**

The minimum altitude to be allocated by the approach surveillance controller will be either the Minimum Sector Altitude, or **1000** above any fixed obstacles:

- within 5NM of the aircraft\*, and
- within the sector 15NM ahead of and within 20° either side of the aircraft's track\*.

\*When the aircraft is within 15NM of the radar antennae, the 5NM in a) and the 15NM in b) may be reduced to 3NM and 10NM respectively.

**LOSS OF COMMUNICATION PROCEDURES****Initial Approach**

Continue visually or by means of an appropriate approved final approach aid. If not possible proceed at **2000**, or last assigned level if higher, to **NDB(L) NWI†**.

**Intermediate and Final Approach**

Continue visually or by means of an appropriate final approach aid. If not possible follow the Missed Approach Procedure to **NDB(L) NWI†**.

† In all cases where the aircraft returns to the holding facility the procedure to be adopted is the Radio Failure Procedure detailed at ENR 1.1.3.

**GENERAL INFORMATION**

- Levels shown are based on QNH.
- Only significant obstacles and dominant spot heights are shown.
- The minimum levels shown within the ATC Surveillance Minimum Altitude Area are in conformance with the Standard European Rules of the Air - SERA.5015.
- Minimum Sector Altitudes are based on obstacles and spot heights within 25NM of the Aerodrome Reference Point.
- Controlled airspace with a base in excess of **5000** or FL55, as appropriate, is not shown.
- The ATC Surveillance service is provided by Primary and/or Secondary Radar equipment.
- This chart may only be used for cross-checking of altitudes assigned when in receipt of an ATC Surveillance service.**
- Detailed description of FIR, UIR, CTA and TMA see ENR 2.1.
- Detailed description of ATC airspace organized at the aerodrome see AD 2.17.

**CHANGE (3/19): OBSTACLE.**