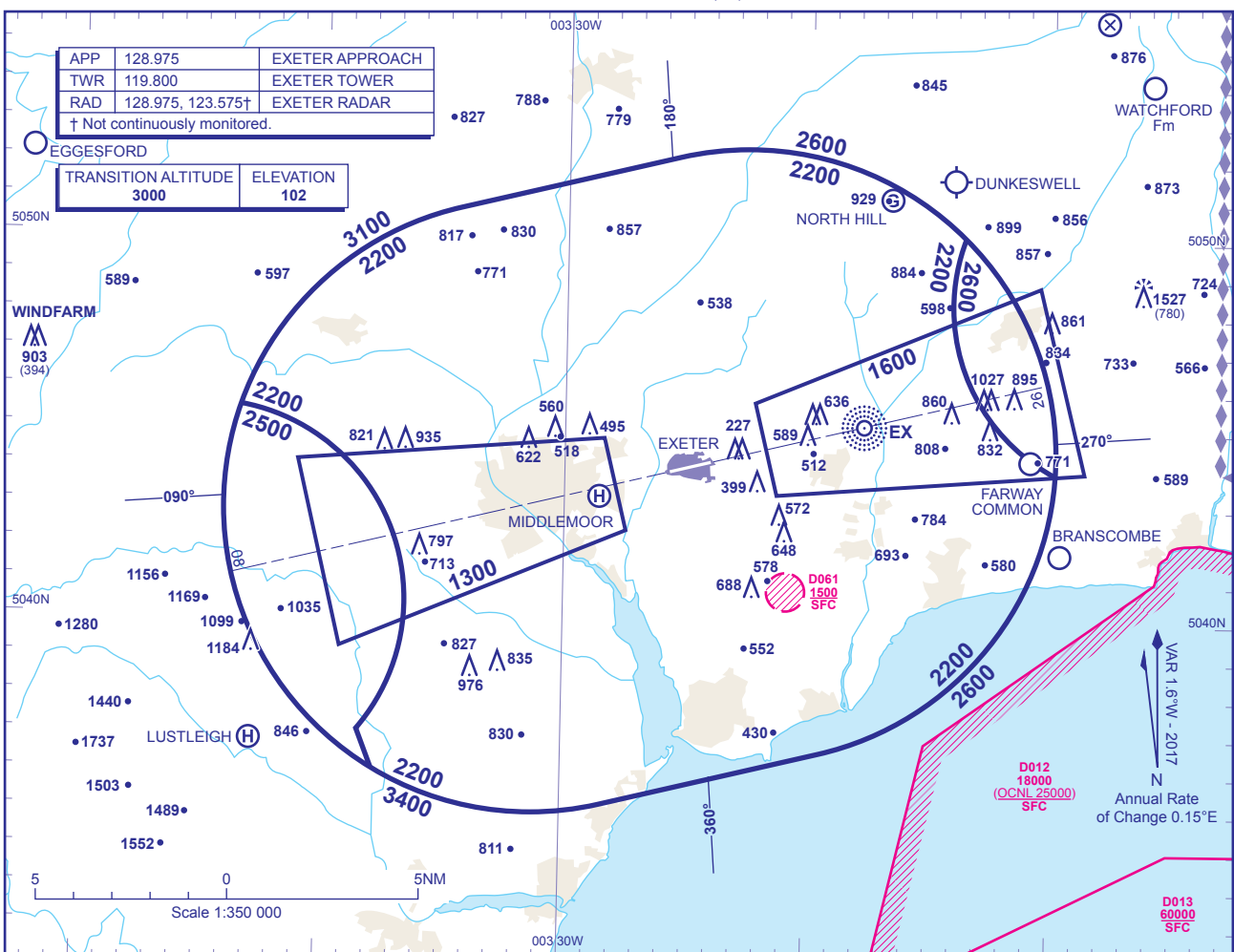


ATC SURVEILLANCE MINIMUM ALTITUDE CHART - ICAO

BEARINGS, TRACKS AND RADIALS ARE MAGNETIC
ELEVATIONS IN FEET AMSL 1522
HEIGHTS IN FEET AGL (780)

EXETER



MINIMUM INITIAL ALTITUDE
Within the ATC Surveillance Minimum Altitude area the minimum initial altitude to be allocated by the approach surveillance controller is:

- 2200** in the sector defined by the lateral limits; 505046N 0033433W - 505211N 0032531W thence clockwise by an arc of a circle radius 8NM centred on 504425N 0032229W to 505009N 0031341W thence anti-clockwise by an arc of a circle radius 5NM centred on 504826N 0030617W to 504400N 0030954W thence clockwise by an arc of a circle radius 8NM centred on 504425N 0032229W to 503640N 0031929W - 503515N 0032829W thence clockwise by an arc of a circle radius 8NM centred on 504300N 0033130W to 503606N 0033751W - 503706N 0033828W thence anti-clockwise by an arc of a circle radius 5.2NM centred on 504024N 0034447W to 504531N 0034327W thence clockwise by an arc of a circle radius 8NM centred on 504300N 0033130W to 505046N 0033433W.
- 2500** in the sector defined by the lateral limits; 504531N 0034327W thence clockwise by an arc of a circle radius 5.2NM centred on 504024N 0034447W to 503706N 0033828W - 503606N 0033751W thence clockwise by an arc of a circle radius 8NM centred on 504300N 0033130W to 504531N 0034327W.
- 2600** in the sector defined by the lateral limits; 505009N 0031341W thence clockwise by an arc of a circle radius 8NM centred on 504425N 0032229W to 504400N 0030954W thence clockwise by an arc of a circle radius 5NM centred on 504826N 0030617W to 505009N 0031341W.

OUTSIDE THE DESIGNATED ATC SURVEILLANCE MINIMUM ALTITUDE AREA
The minimum altitude to be allocated by the approach surveillance controller will be either the Minimum Sector Altitude, or **1000** above any fixed obstacles:

- within 5NM of the aircraft*, and
- within the sector 15NM ahead of and within 20° either side of the aircraft's track*.

*When the aircraft is within 15NM of the radar antennae, the 5NM in a) and the 15NM in b) may be reduced to 3NM and 10NM respectively.

LOSS OF COMMUNICATION PROCEDURES
Initial Approach
Continue visually or by means of an appropriate approved final approach aid. If not possible proceed at **2500**, or last assigned level if higher to **NDB(L) EX†**.
Intermediate and Final Approach
Continue visually or by means of an appropriate final approach aid. If not possible follow the Missed Approach Procedure to **NDB(L) EX†**.
† In all cases where the aircraft returns to the holding facility the procedure to be adopted is the Radio Failure Procedure detailed at ENR 1.1.3.

GENERAL INFORMATION

- Levels shown are based on QNH.
- Only significant obstacles and dominant spot heights are shown.
- The minimum levels shown within the ATC Surveillance Minimum Altitude Area are in conformance with the Standard European Rules of the Air - SERA.5015.
- Minimum Sector Altitudes are based on obstacles and spot heights within 25NM of the Aerodrome Reference Point.
- Controlled airspace with a base in excess of **5000** or FL55, as appropriate, is not shown.
- This chart should only be used for the cross-checking of assigned altitudes whilst in receipt of an ATC Surveillance service.**
- When vectoring an aircraft within the Final Approach Vectoring Area descent clearance below the SMAA to the FAVA altitude may only be issued if the aircraft is either established on the final approach track or on an intercept of 40° or less, and in the case of instrument approaches other than SRA is cleared to intercept the final approach track.**

CHANGE (11/17): MAG VAR. D012 & D013 UPDATED. OBSTACLES. SYMBOLOGY UPDATED.

AERO INFO DATE 10 JUL 17